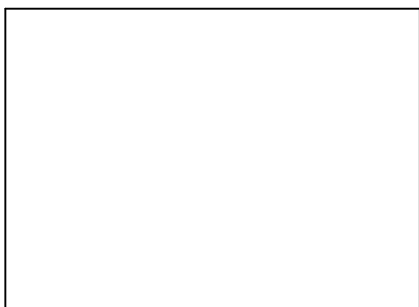
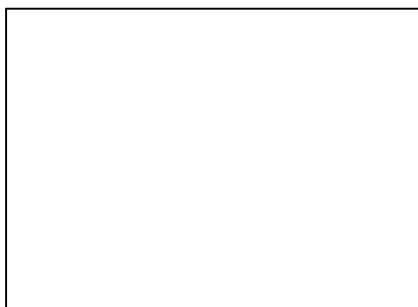
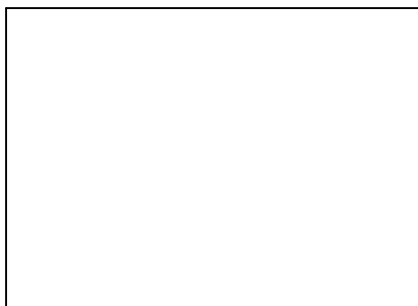




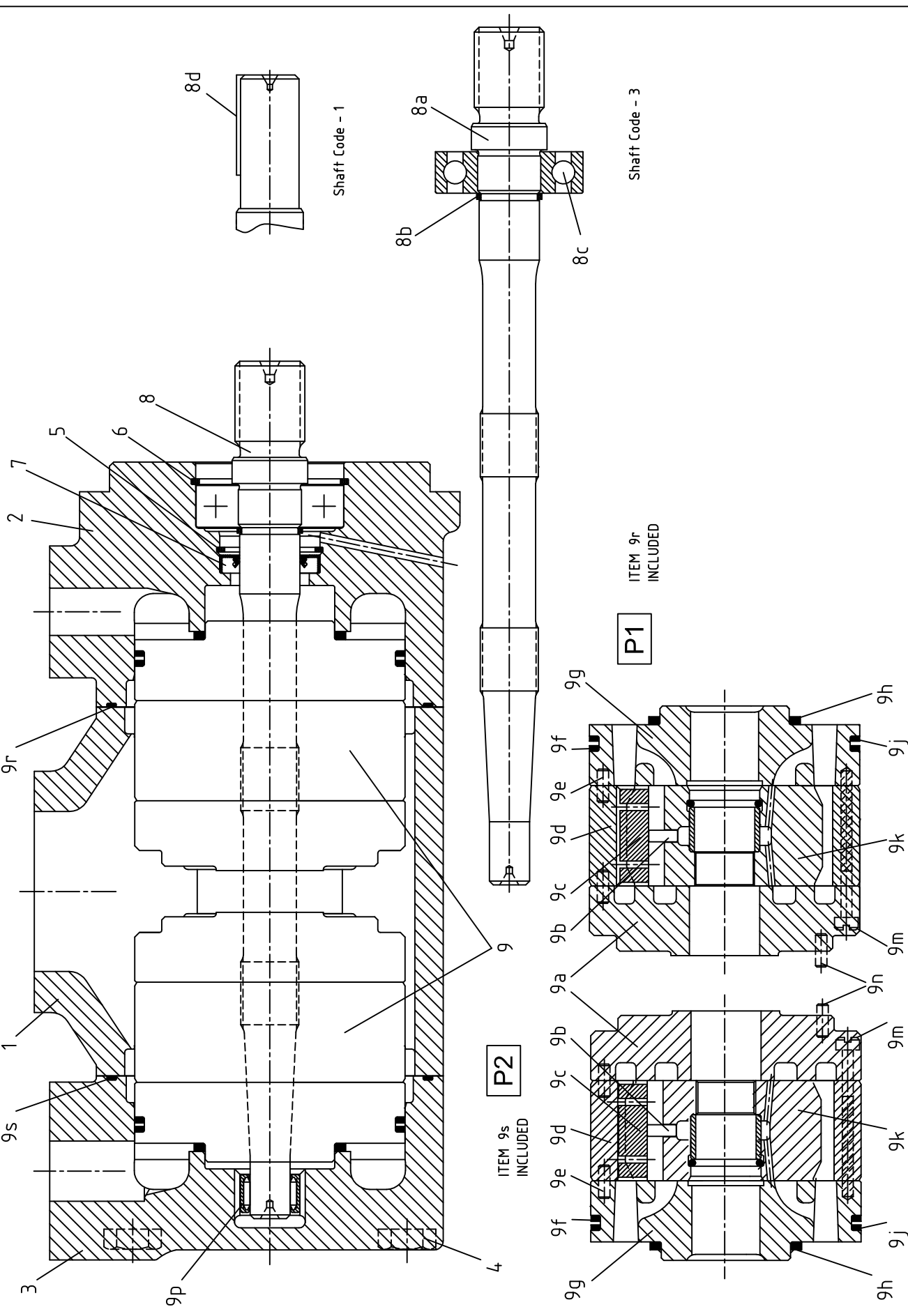
VT6BB

Double vane pump



PHOTO

Bold printed are recommended repair kits and assemblies



MODEL CODE

VT6BB - B09 - 1 R 00 - A 1 02 *

Series _____ Displacement _____

Cam ring (P1 & P2)	in ³ /rev (cm ³ /rev)
B02 =	(0.39) 6.5
B03 =	(0.54) 8.8
B04 =	(0.78) 12.8
B06 =	(1.26) 20.7
B08 =	(1.59) 26.1
B09 =	(1.92) 31.5
B12 =	(2.42) 39.7

Type of Shaft _____

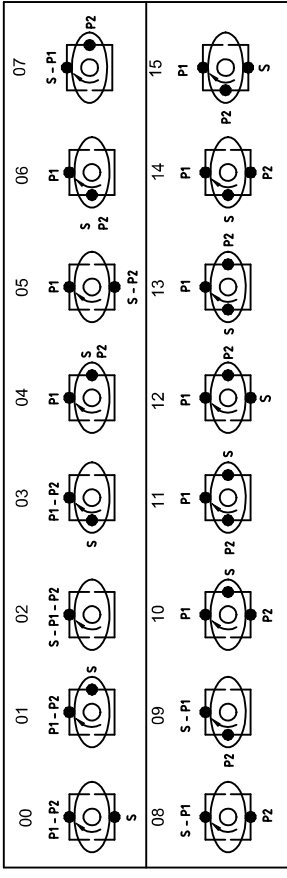
1 - Keyed (Non SAE)
 3 - Splined

Direction of rotation (view on shaft end) _____

R - clockwise
 L - counter-clockwise

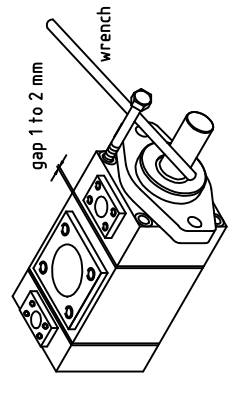
Porting combination _____

00 - standard S - Suction port P - Pressure port



To change porting position, follow the steps below:
 Secure pump and remove 4 bolts from housing. Move the housing 1 to 2 mm away from mounting flange. Insert Two bolt halfway to housing. Install a wrench between the Two bolts and turn in the desired way, so that the required position of pressure port with respect to suction is obtained. Reinstall the bolts and tighten to corresponding torque.

Instruction : Do not remove housing completely from the mounting flange but only just 1 to 2 mm to avoid the cartridge pin to move out from the housing-dowel pin hole. make sure no piece of paint enters in to the gap to avoid leakage.
 If it is difficult to turn housing put some hydraulic oil to the pressure port to lubricate the pressure port seals.



Modifications _____

Port connections _____

CODE	S	P1 & P2
00	2" SAE 4 bolt (UNC)	SAE 12 1" 1/16 12 UNF-2B
01	2" SAE 4 bolt (UNC)	3/4" SAE 4 bolt (UNC)
M0	2" SAE 4 bolt (METRIC)	3/4" SAE 4 bolt (METRIC)

Seal class _____

1 - S1 (for mineral oil)
 4 - S4 (for fire resistant fluids)
 5 - S5 (for mineral oil and fire resistant fluids)

Design letter _____

Veljan Hydrair Limited , Balanagar , Hyderabad - 500 037 , INDIA . Phone : ++91 40 23772794,95 FAX : ++91 40 23773963 , E-mail : info@veljan.com

Rights of alteration reserved

Print	_____
Replace	_____
Revision	_____
Printed in India	_____