



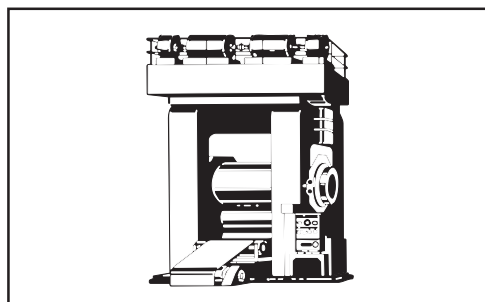
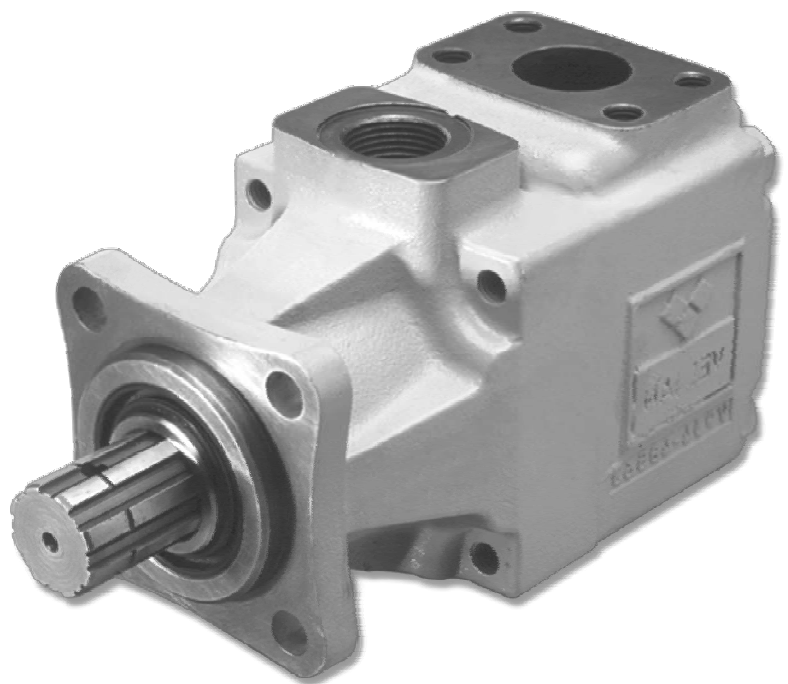
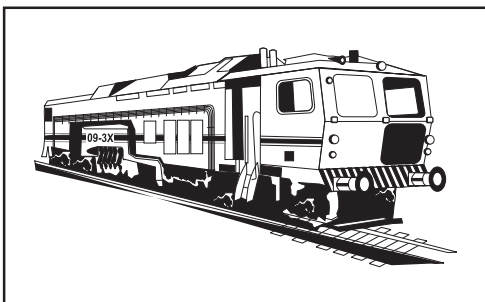
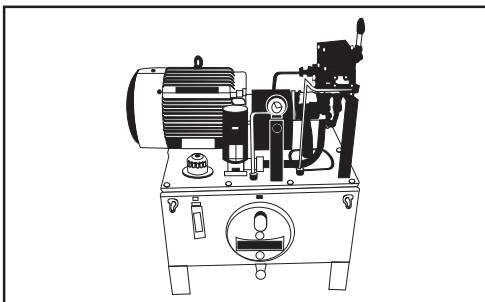
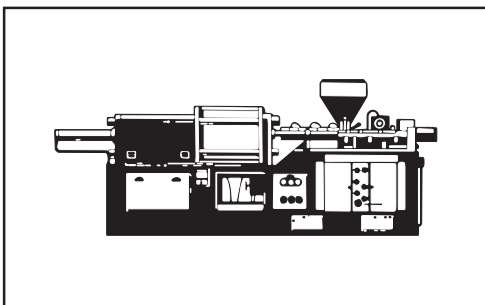
**VELJAN**

**Service Information**

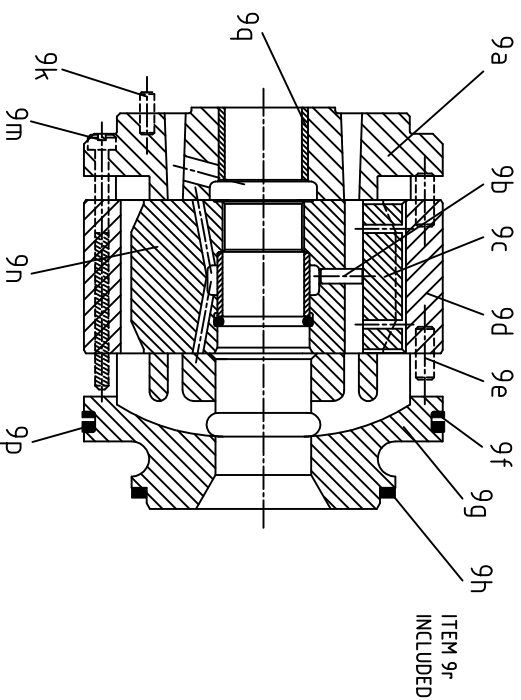
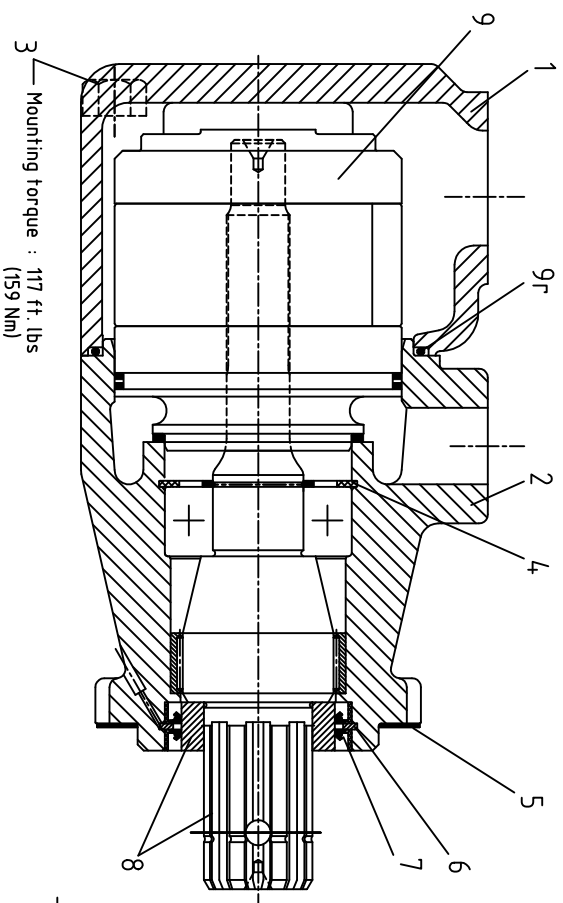
**SS4 - 00121**

## **VT6GC**

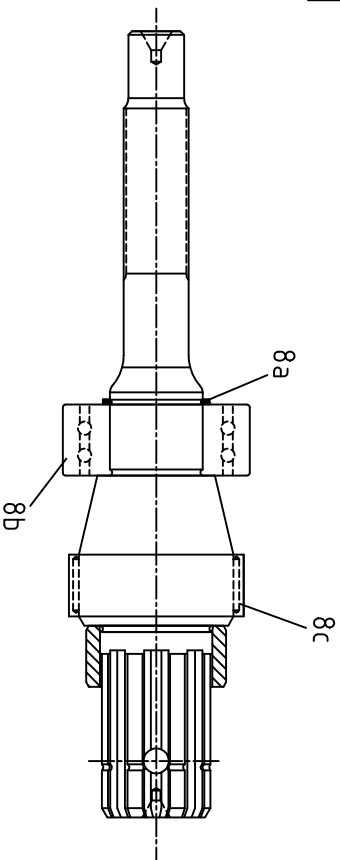
### **Single vane pump**



**Bold printed are recommended repair kits and assemblies**



Item pos.	Description	Part No.	Qty
		VT6GC	
1	Housing (UNC)	V034-48564	1
	Housing (Metric)	C-SK-00704	
2	Mounting flange (Standard) (00)	H-034-66439	1
	Mounting flange (Standard) (01)	H-034-66480	
	Mounting flange (Standard) (M1)	H-034-66792	
3	Mounting Screw	V306-40038	4



4	Retaining ring	V356-30244	1
5	Gasket seal	H-034-66133	1
6	Retaining ring	V356-30244	1
7	Shaft seal (S1-0.7 bar)	V620-00007-3	2
8	Shaft and bush ass'y (#1) (Splined code 6)	C-S14-72077	1
8a	Retaining ring	V356-31118	1
8b	Ball bearing	V230-90010-3	1
8c	Needle bearing	V230-90009-3	1
10	Cartridge assembly B03 CW	VS24-30097	1
	Cartridge assembly B03 CCW	VS24-30098	
	Cartridge assembly B05 CW	VS24-30099	
	Cartridge assembly B05 CCW	VS24-30100	
	Cartridge assembly B06 CW	VS24-30101	

Item pos.	Description	Part No.	Qty
		VT8GC	
	Cartridge assembly B06 CCW	VS24-30102	
	Cartridge assembly B08 CW	VS24-30103	
	Cartridge assembly B08 CCW	VS24-30104	
	Cartridge assembly B10 CW	VS24-30105	
	Cartridge assembly B10 CCW	VS24-30106	
	Cartridge assembly B12 CW	VS24-30107	
	Cartridge assembly B12 CCW	VS24-30108	
	Cartridge assembly B14 CW	VS24-30109	
	Cartridge assembly B14 CCW	VS24-30110	
	Cartridge assembly B15 CW	C-S14-72149	
	Cartridge assembly B15 CCW	C-S14-72150	
	Cartridge assembly B17 CW	VS24-30111	
	Cartridge assembly B17 CCW	VS24-30112	
	Cartridge assembly B20 CW	VS24-30113	
	Cartridge assembly B20 CCW	VS24-30114	
	Cartridge assembly B22 CW	VS24-30115	
	Cartridge assembly B22 CCW	VS24-30116	
	Cartridge assembly B25 CW	VS24-30117	
	Cartridge assembly B25 CCW	VS24-30118	
	Cartridge assembly B28 CW	VS24-30119	
	Cartridge assembly B28 CCW	VS24-30120	
	Cartridge assembly B31 CW	VS24-45791	
	Cartridge assembly B31 CCW	VS24-45792	
9a	Port plate - rear (Bi-dir)	034-59047	1
9b	Pin vane holdout	V034-24982	10
9c	Vane	V034-66716	10
9d	Cam ring - 003	V034-59050	1
	Cam ring - 005	V034-59051	
	Cam ring - 006	V034-59052	
	Cam ring - 008	V034-59053	
	Cam ring - 010	V034-59054	
	Cam ring - 012	V034-66595	
	Cam ring - 014	V034-59206	
	Cam ring - 015	C-034-66893	
	Cam ring - 017	V034-59207	
	Cam ring - 020	V034-66607	
	Cam ring - 022	V034-59208	
	Cam ring - 025	V034-59209	
	Cam ring - 028	V034-59245	
	Cam ring - 031	V034-66843	
9e	Dowel pin	V324-21208	2

Item pos.	Description	Part No.	Qty
		VT8GC	
9f	Back-up ring	V618-15016	1
9g	Port plate - pressure (Bi-dir)	H-034-66453	1
9h	Sq. section seal	V691-10229	1
9k	Dowel pin	V323-82010	1
9m	Screw	V317-06266	2
9n	Rotor-insert ass'y	VS24-30049	1
9p	Sq. section seal	V691-10238	1
9q	Bearing bush	V034-71867	1
9r	O' ring	V671-00244	1
7,9f	Seal kit (51 - 0.7 bar)	VS14-97665	1
9h,9p			
9r			
2,4,	Mounting cap and shaft ass'y (00)	VS14_97682	1
5,6,	Mounting cap and shaft ass'y (01)	VS14_97683	1
7,8,	Mounting cap and shaft ass'y (M1)	VS24-44559	1
8a,8b			
8c			
9a,9q	Port plate - rear and bush ass'y	VS14-45605	1

# MODEL CODE

VT6GC - B22 - 6 R 00 - A 1 00 \*

Series \_\_\_\_\_

Cam ring \_\_\_\_\_ Displacement \_\_\_\_\_ Cam ring \_\_\_\_\_ Displacement \_\_\_\_\_

	in <sup>3</sup> /rev (cm <sup>3</sup> /rev)		in <sup>3</sup> /rev (cm <sup>3</sup> /rev)
B03 =	0.66 (10.8)	B15 =	3.08 (55.5)
B05 =	1.05 (17.2)	B17 =	3.56 (58.3)
B06 =	1.30 (21.3)	B20 =	3.89 (63.8)
B08 =	1.61 (26.4)	B22 =	4.29 (70.3)
B10 =	2.08 (34.1)	B25 =	4.84 (79.3)
B12 =	2.26 (37.1)	B28 =	5.42 (88.8)
B14 =	2.81 (46.0)	B31 =	6.10 (100.0)

Type of Shaft \_\_\_\_\_

6 = Splined (DIN 5462)

Modification

Mounting w/connection variables

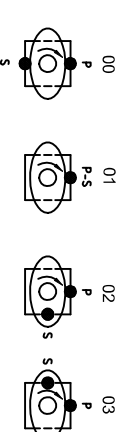
	UNC		METRIC		
	00	01	M0	M1	M1
S=1"1/2	SAE	SAE	SAE	SAE	SAE
P=1"	BSP	SAE	BSP	SAE	SAE

Seal class

1 = S1 - BUNA N

Design letter

Porting combination : (00 = Standard)



Direction of rotation

R = Clockwise

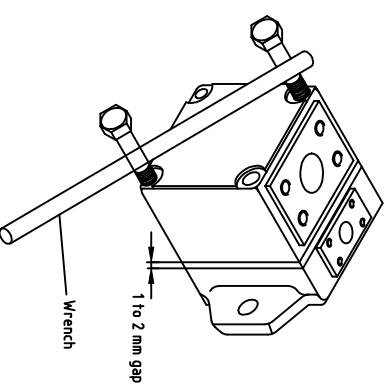
L = Counter - clockwise

To change porting position, follow the steps below:

Secure pump and remove 4 bolts from housing. Move the housing 1 to 2 mm away from mounting flange. Insert Two bolt halfway to housing. Install a Wrench between the Two bolts and turn in the desired way, so that the required position of pressure port with respect to suction is obtained. Reinstall the bolts and tighten to corresponding torque.

Instruction : Do not remove housing completely from the mounting flange but only just 1 to 2 mm to avoid the cartridge pin to move out from the housing-dowel pin hole. make sure no piece of paint enters in to the gap to avoid leakage.

If it is difficult to turn housing put some hydraulic oil to the pressure port to lubricate the pressure port seals.



Veljan Hydrair Limited , Balanagar , Hyderabad - 500 037 , INDIA . Phone : ++91 40 23772794,95 FAX : ++91 40 23773963 , E-mail : info@veljan.com

Rights of alteration reserved

Print	_____
Replace	_____
Revision	_____

Printed in India